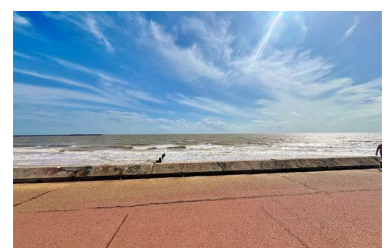




Southcliff Walton-on-the-Naze, CO14 8JQ

A rare opportunity to own a desirable front row beach hut in Walton-on-the-Naze, perfectly positioned to enjoy uninterrupted PANORAMIC SEA VIEWS. 'Patsy' is ideally situated close to Walton Pier and within easy reach of mainline railway station with links to London Liverpool Street. This hut offers both convenience and charm. With direct access to the beach and promenade.

- Prime Front Row Position In Walton-on-the-Naze
- Stunning Uninterrupted Sea Views
- Easy Access To the beach & promenade
- Conveniently close to local shops & amenities
- Nearby toilet facilities
- Close to Walton Pier
- Keys to View

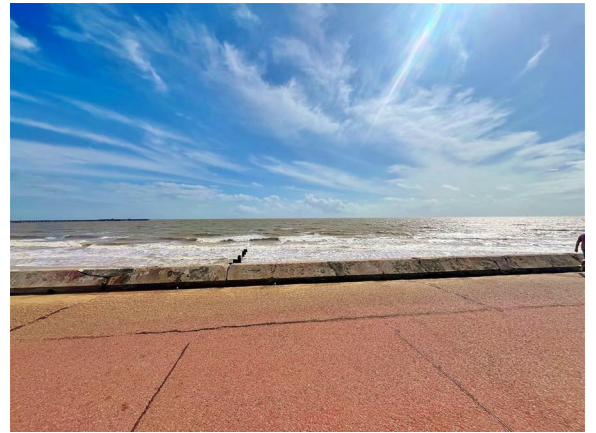


Price £42,000 Leasehold

Southcliff, Walton-on-the-Naze, CO14 8JQ

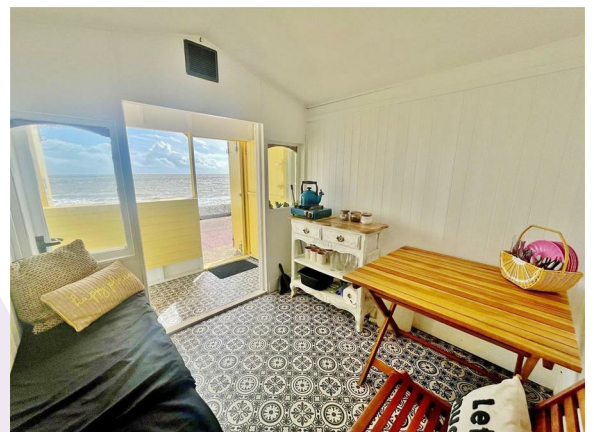
Accommodation comprises with approximate room sizes:-

Steps leading down to:

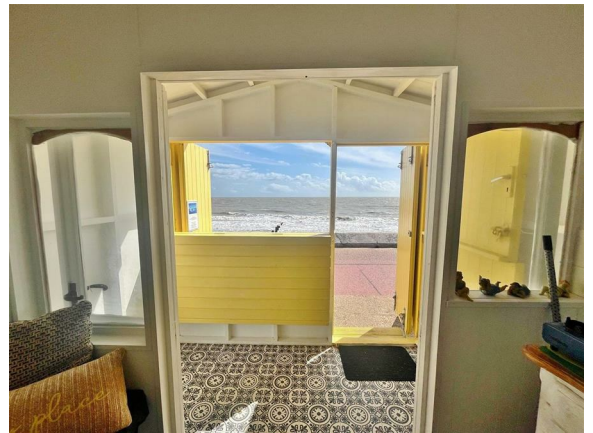


Beach Hut

Stable door. Storm shutters. Window opening with direct sea views. Mosaic vinyl flooring. Fitted bench with storage space under.



Beach Hut Alternative View



ANTI-MONEY LAUNDERING REGULATIONS 2017 - Prospective purchasers will be asked to produce photographic identification and proof of residence documentation once entering into negotiations for a property in order for us to comply with current Legislation.

REFERRAL FEES - Sheen's reserve the right to recommend additional services. Sheen's receive referral fees of; £50 - £150 per transaction when using a suggested solicitor. 10% referral fee on a nominated Surveying Company. 10% referral fee on their nominated independent mortgage broker service. Clients have the right to use whomever they choose and are not bound to use Sheen's suggested providers.

Lease info

It is up to any interested party to satisfy themselves of all the relevant Lease details with their legal representatives before incurring any expenditure.

Selling properties... not promises

📍 149 Connaught Avenue, Frinton On Sea, Essex, CO13 9AH
☎ 01255 852555 ✉ frinton@sheens.co.uk 🌐 sheens.co.uk

Sheen's
The *Action* Agents

